

DADE COUNTY BAR ASSOCIATION

COMMERCIAL BUILDING REMODEL

123 NW 1ST AVE

COPYRIGHT

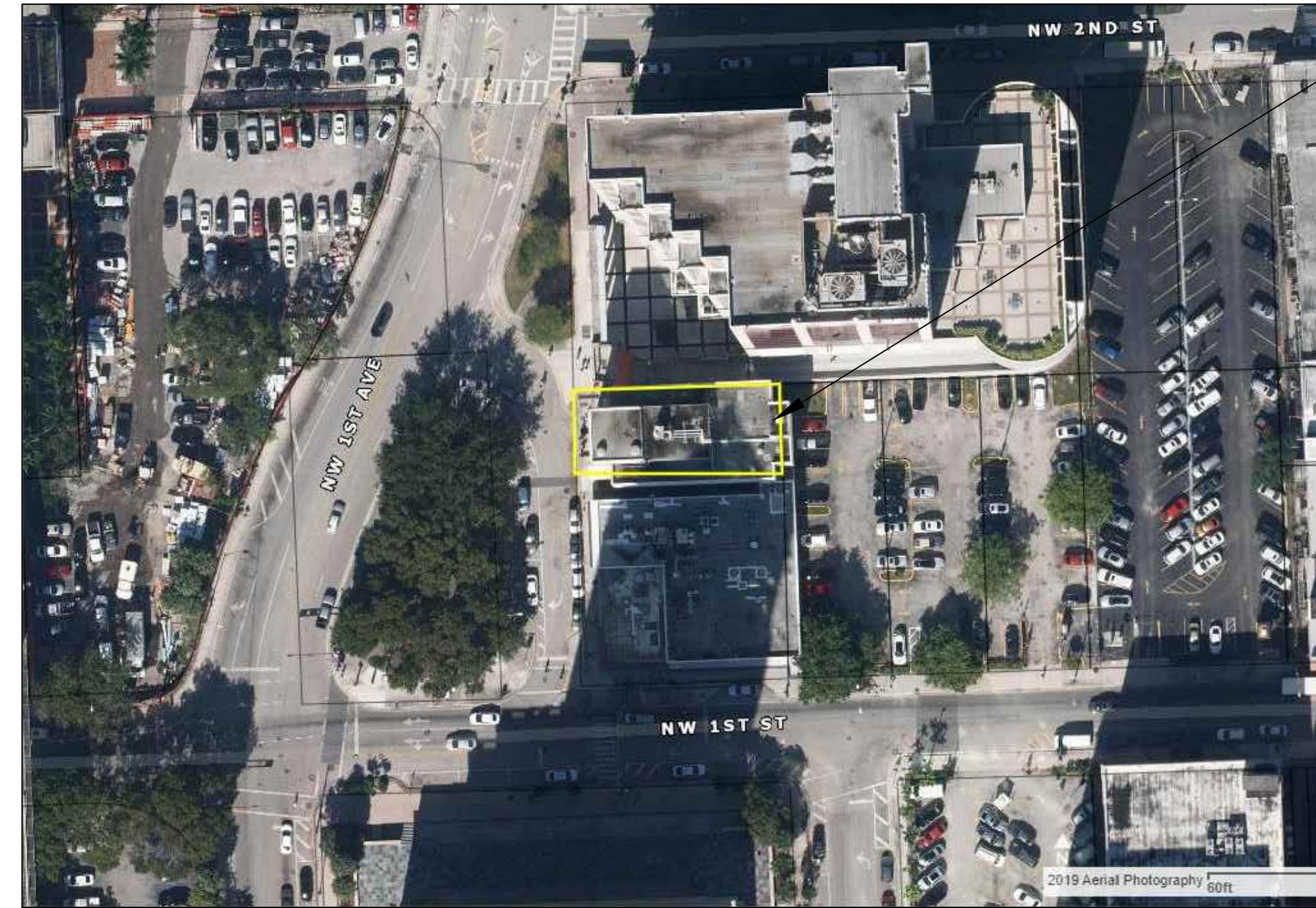
ALL IDEAS, DRAWINGS, PLANS AND ARRANGEMENTS INDICATED OR REPRESENTED BY THESE DRAWINGS ARE OWNED BY AND THE PROPERTY OF THE ARCHITECT OR ENGINEER OF RECORD. THEY WERE CREATED FOR AND DEVELOPED FOR USE ON AND IN CONNECTION WITH THE SPECIFIED PROJECT. THE IDEAS, DESIGNS, DRAWINGS, PLANS AND ARRANGEMENTS OF THE SPECIFIED PROJECT SHALL NOT BE USED BY OR DISCLOSED TO ANY PERSONS, FIRM, OR CORPORATION FOR ANY PURPOSE WHATSOEVER WITHOUT THE WRITTEN PERMISSION OF THE ARCHITECT OR ENGINEER OF RECORD.

MIAMI, FL 33128

PROJECT INFORMATION

CODE REFERENCE	2017 FLORIDA BUILDING CODE. 2017 FLORIDA EXISTING BUILDING CODE. 2017 FLORIDA MECHANICAL CODE. 2017 FLORIDA PLUMBING CODE. 2017 FLORIDA FIRE PROTECTION CODE. 2010 NATIONAL ELECTRIC CODE AND SUPPLEMENTS 2017 FBC HVHZ NFPA STANDARDS NFPA 10 NFPA 13 2010 EDITION NFPA 72 2010 EDITION NFPA 88A NFPA 90A NFPA 92A NFPA 92B NFPA 110 AMERICANS WITH DISABILITIES ACT, INCLUDING REVISIONS THROUGH SUPPLEMENTS ALL LOCAL ORDINANCES HAVING JURISDICTION NATIONAL FIRE PROTECTION ASSOCIATION LIFE SAFETY CODE. FLORIDA ACCESSIBILITY CODE FOR BUILDING CONSTRUCTION.
----------------	---

BUILDING DATA: DESCRIPTION: 5 STORY COMMERCIAL USE BUILDING
CONSTRUCTION TYPE : CONSTRUCTION TYPE IIA SPRINKLERED BUILDING
SCOPE OF WORK AREA: REMODELING OF AN EXISTING COMMERCIAL BUILDING
ALTERATION : LEVEL 2 AS PER SECTION 404, EXISTING BUILDING CODE
404.1 SCOPE. LEVEL 2 ALTERATIONS INCLUDE THE RECONFIGURATION OF SPACE, THE ADDITION OR ELIMINATION OF ANY DOOR OR WINDOW, THE RECONFIGURATION OR EXTENSION OF ANY SYSTEM, OR THE INSTALLATION OF ANY ADDITIONAL EQUIPMENT.
CATEGORY OF BUILDING REHABILITATION: MODIFICATION, AS PER SECTION FFPC 5-ED, CH43.2.2.1
PARKING: EXISTING PARKING TO REMAIN



LOCATION OF PROJECT

LEGAL DESCRIPTION:
SEWELLS SUB PB 3-8
LOTS 7 & 8
LOT SIZE 50,000 X 100
OR 9295 109

ZONING: T6-80-0

List Of Drawings

Cover Sheet	TS-1
1st Floor Plan	A.2.2
2nd Floor Plan	A.2.3
3rd Floor Plan	A.2.4
4th Floor Plan	A.2.5
5th Floor Plan	A.2.6

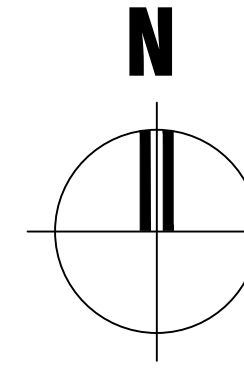
DESIGN/ BUILD TEAM

ARCHITECT: CHARLES WAYNE FERRELL (AA 26002488)
ADDRESS: 925 SE 8TH AVE SUITE 101 DEERFIELD BEACH, FL 33441
PHONE: (954)427-1069
E-MAIL: WAYNE @ ARC1.ORG

GENERAL CONTRACTOR: MYRON ROSNER, PRESIDENT-SIZ CONSTRUCTION CORP.
ADDRESS: 1121 NE 178TH TERRACE NORTH MIAMI BEACH, FL 33162
PHONE: (305)652-2805
E-MAIL: SIZINC@COMCAST.NET

LOCATION MAP

NTS



ABBREVIATIONS LEGEND

ABV	ABOVE	CRS	COURSE (S)	FR	FRAME (D), (ING)	MH	MANHOLE	RL	UNDERCUT
AFF	ABOVE FINISHED FLOOR	CFM	CUBIC FEET PER MINUTE	FUR	FURRED (ING)	MFR	MANUFACTURE (ER)	RR	UNDERWRITER'S LABORATORY
ACC	ACCESS	CU.FT.	CUBIC FOOT			MKB	MARKER BOARD	REF	URINAL
ACQU	ACOUSTICAL	CYD	CUBIC YARD	GA	GAGE, GAUGE	MAS	MASONRY	REFR	REFRIGERATOR
APC	ACOUSTICAL PANEL CEILING			GALV	GALVANIZED	MO	MASONRY OPENING	REINF	REINFORCED (D), (ING)
ADD	ADDENDUM	DEMO	DEMOLISH DEMOLITION	GC	GENERAL CONTRACTOR	MAX	MAXIMUM	RCP	REINFORCED CONCRETE PIPE
ADJ	ADJACENT	DTL	DETAIL	GL	GLASS, GLAZING	MECH	MECHANIC (AL)	REQ'D	REQUIRED
A/C	AIR CONDITIONING	DIAG	DIAGONAL	GB	GLASS BAR	MED	MEDIUM	RA	RETURN AIR
ALT	ALTERNATE	DIA	DIAMETER	GWB	GYPSUM WALLBOARD	MTL	METAL	REV	REVISION (S), REVISED
AL, ALUM	ALUMINUM	DM	DIMENSION			MIN	MINIMUM	RH	RIGHT HAND
ANC	ANCHOR, ANCHORAGE	DIV	DIVISION	HDW	HARDWARE	MIS	MISCELLANEOUS	R/W	RIGHT OF WAY
ANC	ANCHOR BOLT	DR	DOOR	HTG	HEATING	MULL	MULLION	RD	ROOF DRAIN
∠	ANGLE	DBL	DOUBLE	HVAC	HEATING/VENTILATING/AIR COND.			RM	ROOM
ANOD	ANODIZED	DN	DOWN	HT	HEIGHT	NRC	NOISE REDUCTION COEFFICIENT	RO	ROUGH OPENING
ARCH	ARCHITECT (URAL)	DS	DOWN SPOUT	HC	HOLLOW CORE	NOM	NOMINAL		
AUTO	AUTOMATIC	D	DRAIN	H	HIGH	N	NORTH	SCH	SCHEDULE
AVE	AVENUE	DWR	DRAWER	HM	HOLLOW METAL	NIC	NOT IN CONTRACT	SEC	SECTION
AVG	AVERAGE	DWG	DRAWING	HMF	HOLLOW METAL FRAME	NTS	NOT TO SCALE	SHT	SHEET
		DF	DRINKING FOUNTAIN	HORZ	HORIZONTAL	NO, #	NUMBER	SH	SHELF, SHELVING
		DW	DISHWASHER	HB	HOSE BIBB			SIM	SIMILAR
				HR	HOUR			SLD	STUDENT LEARNING DISABILITIES
BM	BEAM					OC	ON CENTER (S)	OPG	OPENING
BLK	BLOCK	EA	EACH	IN	INCH	OPP	OPPOSITE	SC	SOLID CORE
BLKG	BLOCKING	E	EAST	INCAN	INCANDESCENT	OA	OVERALL	S	SOUTH
BD	BOARD	ELEC	ELECTRIC (AL)	INCL	INCLUDE (D) (ING)	OH	OVERHEAD	STC	SOUND TRANSMITTANCE COEFFICIENT
BOT	BOTTOM	EWC	ELECTRIC WATER COOLER	INSUL	INSULATION	OZ	OUNCE	SPEC	SPECIFICATION (S)
BRG	BEARING	EW	ELECTRIC WATER HEATER	ID	INSIDE DIAMETER	OD	OUTSIDE DIAMETER	SPKR	SPRINKLER
BLDG.	BUILDING	ELEV	ELEVATION	INT	INTERIOR			SQ	SQUARE
BUR	BUILT UP ROOFING	EMER	EMERGENCY	INV	INVERT	PNL	PANEL	SS	STAINLESS STEEL
		EQ	EQUAL	KIT	KITCHEN	PTD	PAPER TOWEL DISPENSER	STD	STANDARD
CAB	CABINET	EXH	EXHAUST			PTR	PAPER TOWEL RECEPTOR	STL	STEEL
CB	CATCH BASIN	EXIST	EXISTING	LAB	LABORATORY	PKG	PARKING	ST	STREET
CI	CAST IRON	EXPJT, EJ	EXPANSION JOINT	LAM	LAMINATE (D)	PVMT	PAVEMENT	STO	STORAGE
CLG	CEILING	EXT	EXTERIOR	LAV	LAVATORY	PLAS	PLASTIC	STR	STRUCTURAL
CEM	CEMENT			LH	LEFT HAND	PLAM	PLASTIC LAMINATE	SUSP	SUSPENDED
				L	LENGTH	PL	PLATE	SYS	SYSTEM
				LLV	LONG LEG VERTICAL	PWD	PLYWOOD		
				LLH	LONG LEG HORIZONTAL	PVC	POLYVINYL CHLORIDE	TKBD	TACKBOARD
				LT	LIGHT	PCF	POUNDS PER CUBIC FOOT	TEL	TELEPHONE
				LVR	LOUVER	PSF	POUNDS PER SQUARE FOOT	TV	TELEVISION
						PSI	POUNDS PER SQUARE INCH	THK	THICK (NESS)
						PT	PRESSURE TREATED	THR	THRESHOLD
						PREFAB	PREFABRICATE (D)	TPD	TOILET PAPER DISPENSER
						PL	PROPERTY LINE	T/SL	TOP OF SLAB
								T/ST	TOP OF STEEL
								T/W	TOP OF WALL
								TB	TOWEL BAR
								T	TREAD
								TYP	TYPICAL

REVISIONS		
REF.	DATE	BY

1031 LA SALLE STREET
JACKSONVILLE, FL 32207
wayne@wayneferrell.com
PH(661) 305-7555

825 S.E. 8TH AVENUE SUITE 101
DEERFIELD BEACH, FL 33441
wayne@arct1.org
PH(954) 427-1069 FAX:(954) 428-9133

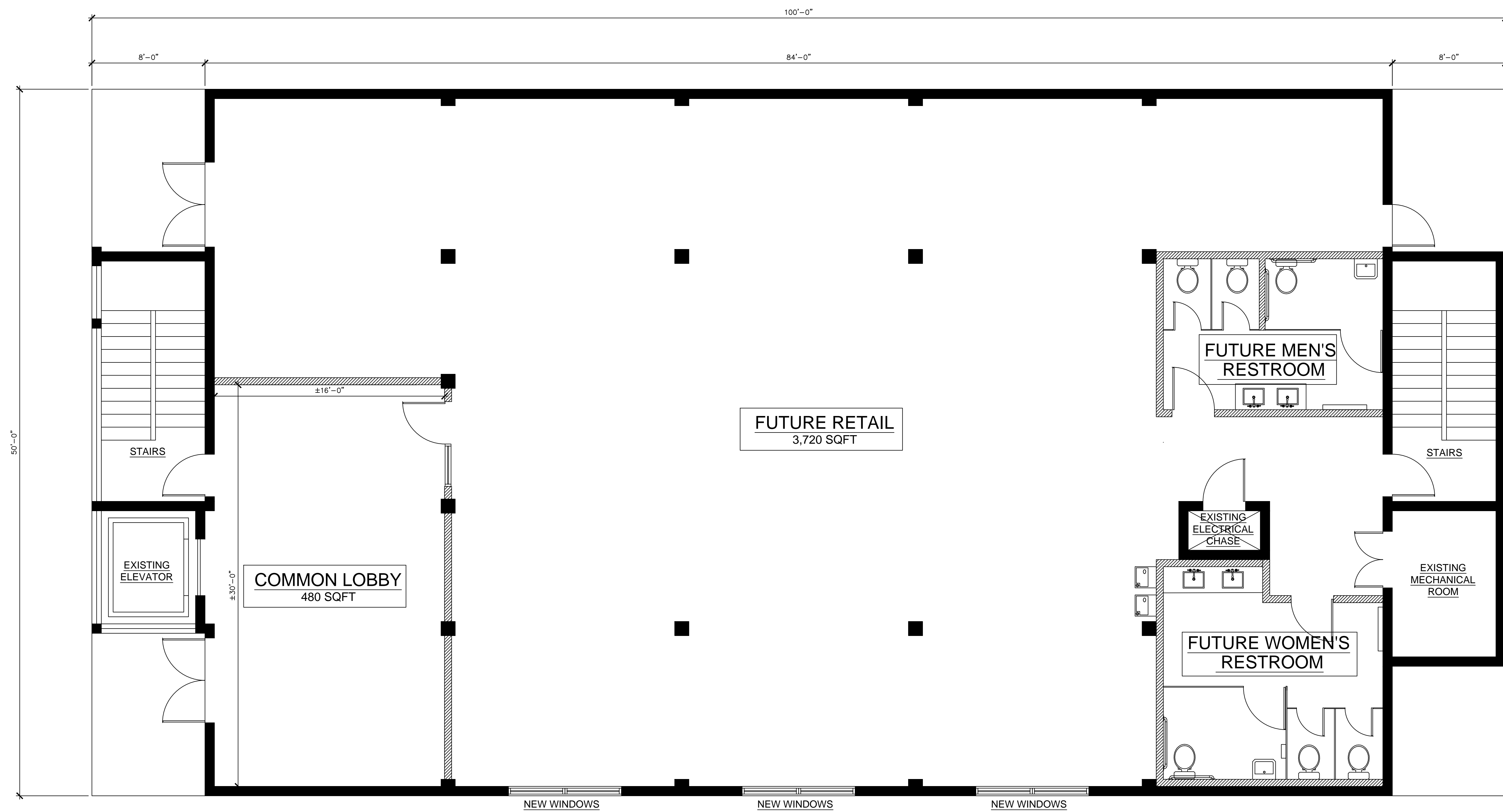
1213 NORTH FRANKLIN STREET
TAMPA, FLORIDA 33602
PH(813) 315-9100 FAX:(813) 318-9101

ARCHITECT COM ONE
ARCHITECTURE

AA 26002488

DADE COUNTY BAR ASSOCIATION
BUILDING REMODEL
123 NW 1ST AVE
MIAMI, FL 33128

C.WAYNE FERRELL, RA	
AR 14,855	
DESIGN	CWF
DESIGN DWG	BC
WORKING DWG	O
BID REVIEW	O
PERMIT REVIEW	O
ISSUE DATE	4-4-20
SCALE	AS NOTED
JOB NO.	20200402
SHEET	
TS-1	



1ST FLOOR PLAN
SCALE: 1/4"=1'-0"

4,200 SQFT RENTABLE
400 SQFT COMMON AREA
TOTAL= 4,600 SQFT

REVISIONS		
REF.	DATE	BY

825 S.E. 8TH AVENUE SUITE 101
DEERFIELD BEACH, FL 33441
wayne@arct1.org
PH:(954) 427-1069 FAX:(954) 428-9133

1031 LA SALLE STREET
JACKSONVILLE, FL 32207
wayne@wayneferrell.com
PH:(661) 305-7555

1213 NORTH FRANKLIN STREET
TAMPA, FLORIDA 33602
PH:(813) 315-9100 FAX:(813) 318-9101



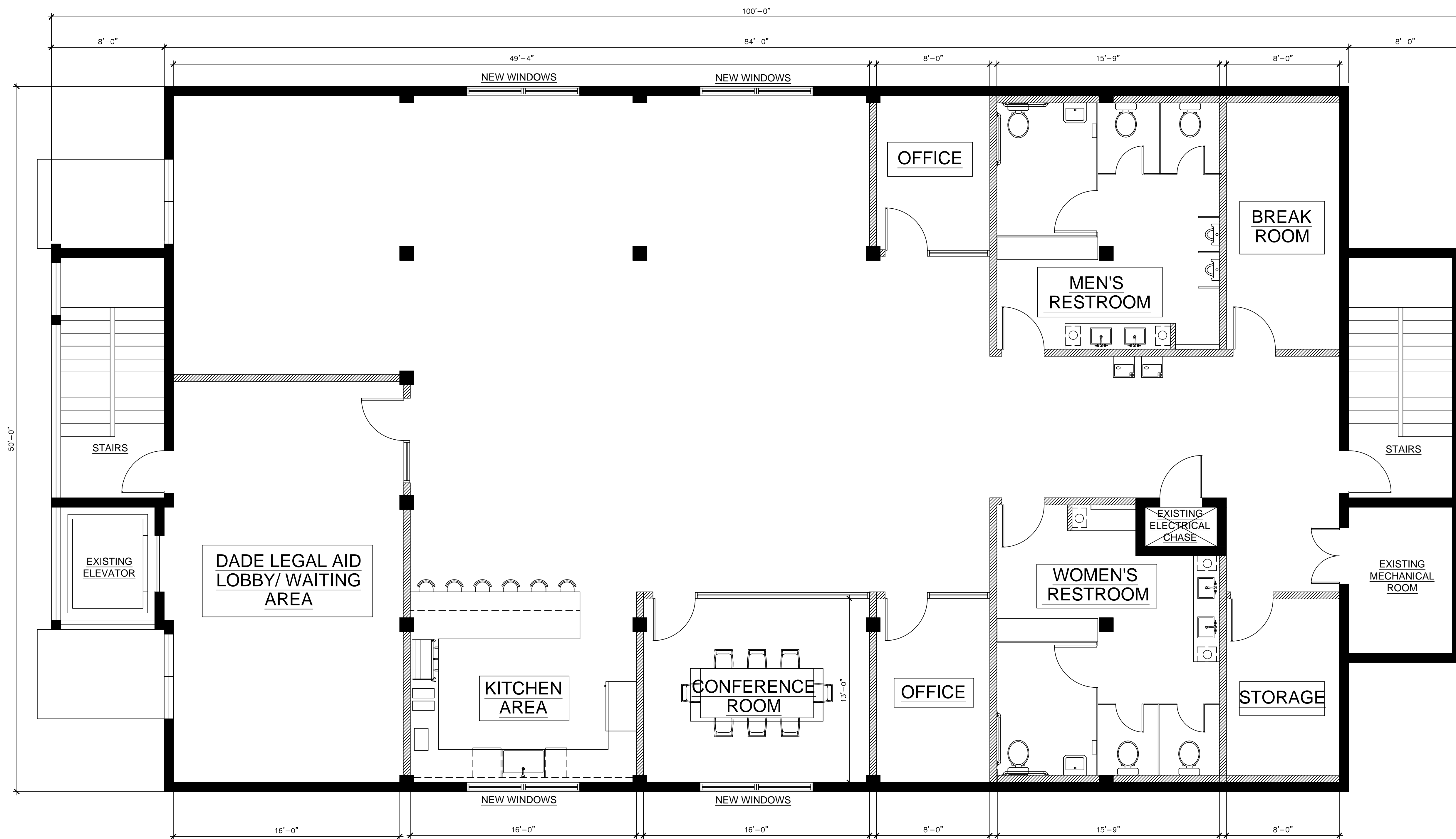
DADE COUNTY BAR ASSOCIATION
BUILDING REMODEL
123 NW 1ST AVE
MIAMI, FL 33128

C.WAYNE FERRELL, RA

AR 14,855

DESIGN	CWF
DESIGN DWG	BC
WORKING DWG	0
BID REVIEW	0
PERMIT REVIEW	0
ISSUE DATE	4-4-20
SCALE	AS NOTED
JOB NO.	20200402

SHEET
A-2.2



2ND FLOOR PLAN 
 SCALE: 1/4"=1'-0"

4,200 SQFT RENTABLE
 400 SQFT COMMON AREA
 TOTAL= 4,600 SQFT

REVISIONS		
REF.	DATE	BY

825 S.E. 8TH AVENUE SUITE 101
 DEERFIELD BEACH, FL 33441
 wayne@arct1.org
 PH:(954) 427-1069 FAX:(954) 428-9133

1031 LA SALLE STREET
 JACKSONVILLE, FL 32207
 wayne@waynerrell.com
 PH:(661) 305-7555

1213 NORTH FRANKLIN STREET
 TAMPA, FLORIDA 33602
 PH:(813) 318-9100 FAX:(813) 318-9101



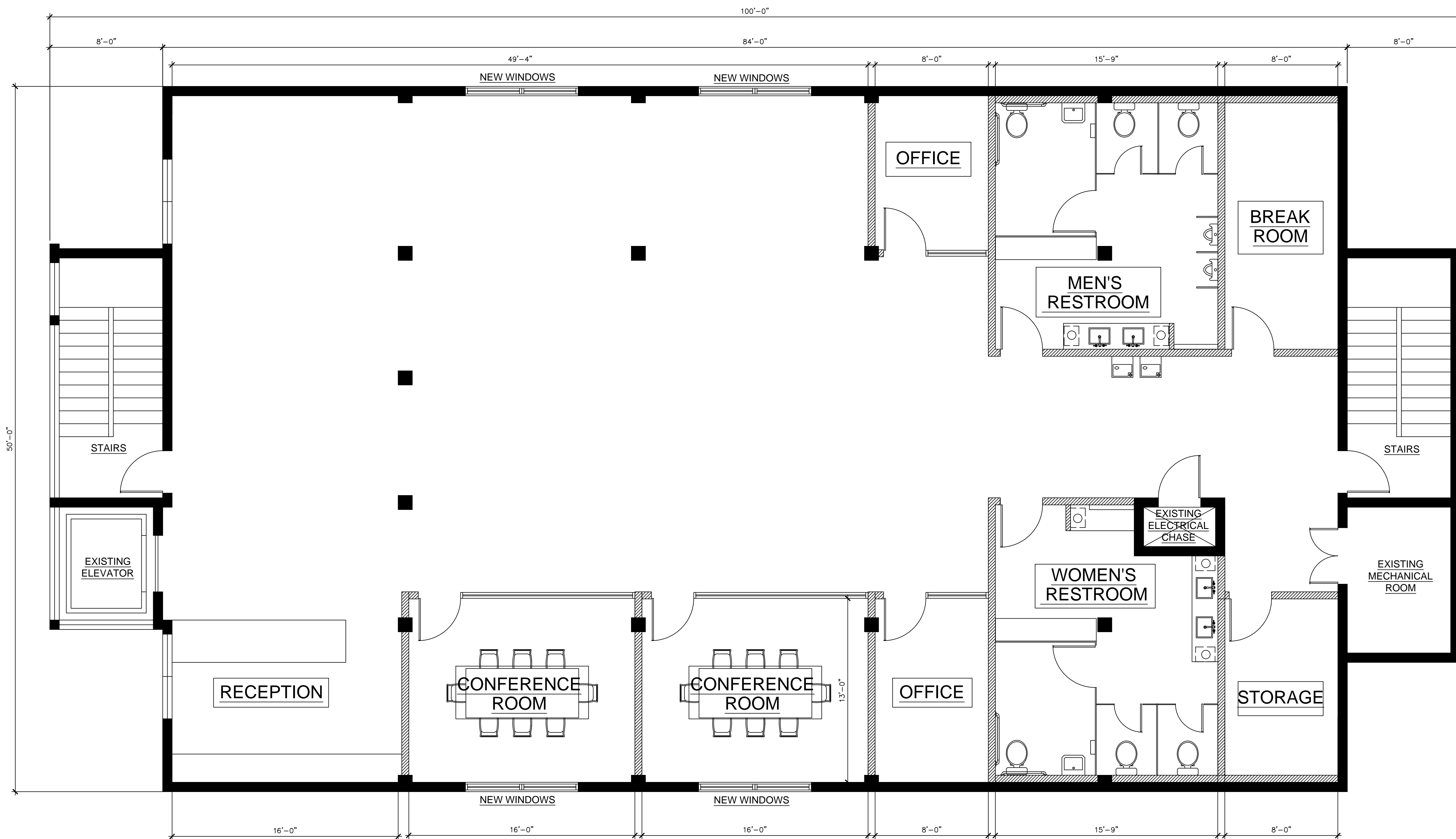
DADE COUNTY BAR ASSOCIATION
 BUILDING REMODEL
 123 NW 1ST AVE
 MIAMI, FL 33128

C.WAYNE FERRELL, RA

AR 14,855

DESIGN	CWF
DESIGN DWG	BC
WORKING DWG	O
BID REVIEW	O
PERMIT REVIEW	O
ISSUE DATE	4-4-20
SCALE	AS NOTED
JOB NO.	20200402

SHEET
A-2.3



3RD FLOOR PLAN 
 SCALE: 1/4"=1'-0"

4,200 SQFT RENTABLE
 400 SQFT COMMON AREA
 TOTAL= 4,600 SQFT

REVISIONS		
REF.	DATE	BY

825 S.E. 8TH AVENUE SUITE 101
 DEERFIELD BEACH, FL 33441
 wayne@arct1.org
 PH:(954) 427-1069 FAX:(954) 428-9133

1031 LA SALLE STREET
 JACKSONVILLE, FL 32207
 wayne@waynerrell.com
 PH:(661) 305-7555

1213 NORTH FRANKLIN STREET
 TAMPA, FLORIDA 33602
 PH:(813) 315-9100 FAX:(813) 318-9101



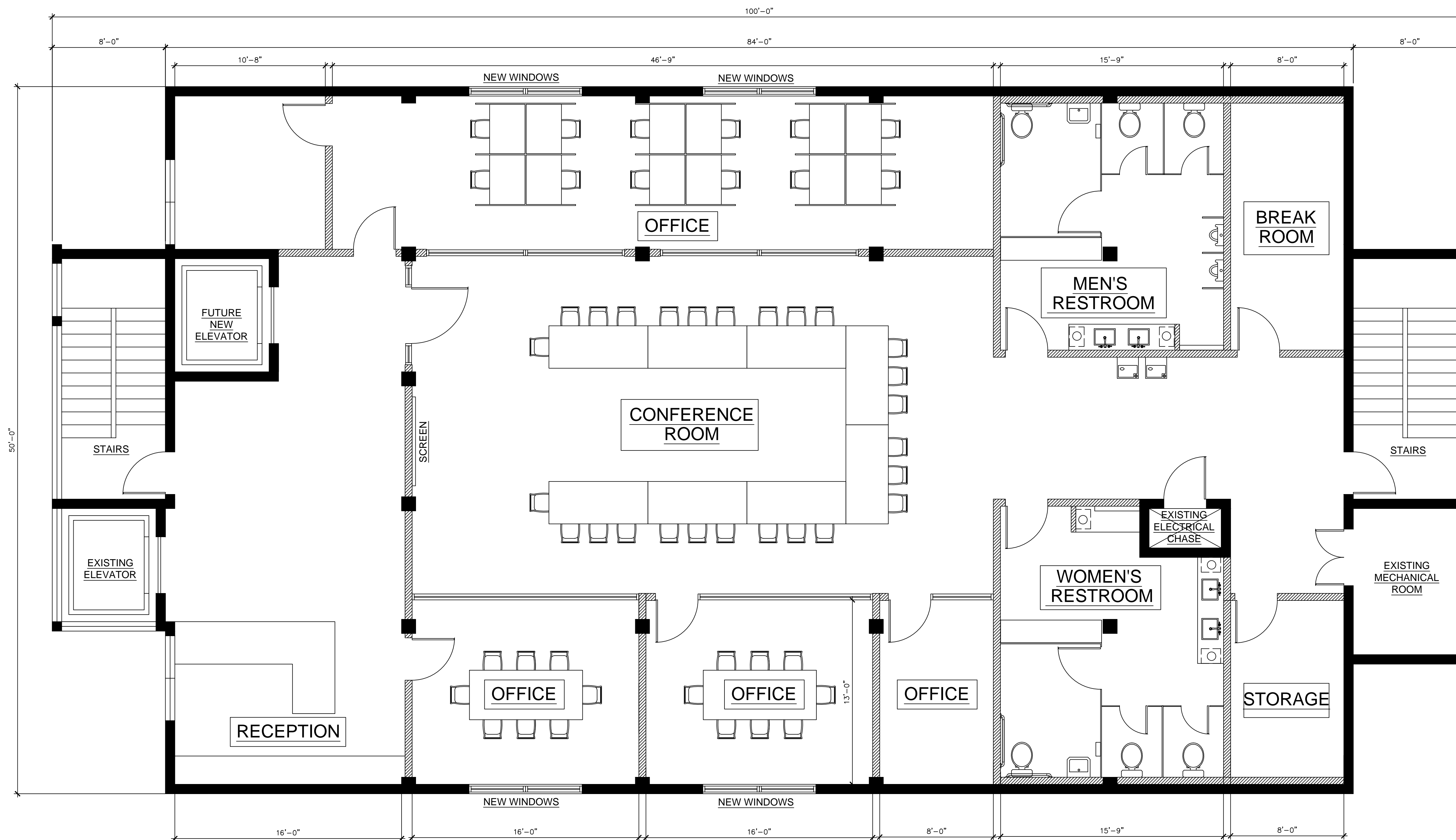
DADE COUNTY BAR ASSOCIATION
 BUILDING REMODEL
 123 NW 1ST AVE
 MIAMI, FL 33128

C.WAYNE FERRELL, RA

AR 14,855

DESIGN	CWF
DESIGN DWG	BC
WORKING DWG	O
BID REVIEW	O
PERMIT REVIEW	O
ISSUE DATE	4-4-20
SCALE	AS NOTED
JOB NO.	20200402

SHEET
A-2.4



4TH FLOOR PLAN 
 SCALE: 1/4"=1'-0"

4,200 SQFT RENTABLE
 400 SQFT COMMON AREA
 TOTAL= 4,600 SQFT

REVISIONS		
REF.	DATE	BY

825 S.E. 8TH AVENUE SUITE 101
 DEERFIELD BEACH, FL 33441
 wayne@arct1.org
 PH:(954) 427-1069 FAX:(954) 428-9133

1031 LA SALLE STREET
 JACKSONVILLE, FL 32207
 wayne@wayneferrell.com
 PH:(661) 305-7555

1213 NORTH FRANKLIN STREET
 TAMPA, FLORIDA 33602
 PH:(813) 318-9100 FAX:(813) 318-9101



DADE COUNTY BAR ASSOCIATION
 BUILDING REMODEL
 123 NW 1ST AVE
 MIAMI, FL 33128

C.WAYNE FERRELL, RA

DESIGN	CWF
DESIGN DWG	BC
WORKING DWG	O
BID REVIEW	O
PERMIT REVIEW	O
ISSUE DATE	4-4-20
SCALE	AS NOTED
JOB NO.	20200402

SHEET
A-2.5

